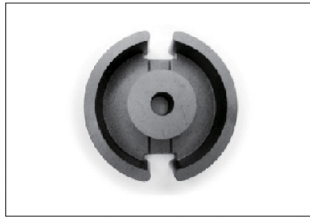
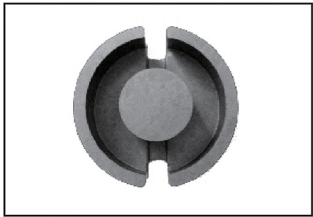


**P CORE**

TYPE	FIG.	Dimensions(mm)					
		A	B	C	D	E	F
P9/5	1	9.15±0.15	2.65±0.1	5.65±0.15	3.8±0.1	7.5min	1.8min
P11/7	1	11.1±0.2	3.3±0.1	6.8±0.25	4.6±0.1	9.2±0.2	2.3±0.15
P14/8	2	14.0±0.3	4.2±0.2	5.9±0.2	11.8±0.4	3.1±0.2	
P18/11	2	18.0±0.4	5.35±0.15	7.45±0.15	14.9min	3.8±0.2	
P26/16	2	25.5±0.5	8.05±0.15	11.1±0.3	21.6±0.4	5.65±0.2	
P30/19	2	30.0±0.5	9.4±0.2	13.3±0.2	24.5min	6.65±0.25	
P35/23	2	35.0±0.6	11.8±0.2	15.7±0.2	29.5min	8.1±0.2	
P36/22	2	35.6±0.6	10.9±0.2	15.9±0.3	29.5min	7.6±0.3	

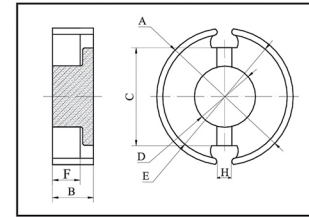
**P CORE**

FIG.1

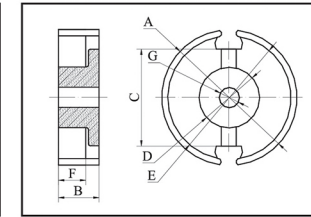


FIG.2

G	H	Cl (mm <sup>2</sup> )	Ae (mm <sup>2</sup> )	Le (mm)	Ve (mm <sup>3</sup> )	AL ± 25% (nH/N <sup>2</sup> )			Weight g/PRS
						FW40	FW44	FW95	
	2.1±0.15	1.20	11.23	13.50	151.6	1200	1250	1450	1.00
	2.2±0.3	0.95	17.25	16.45	283.8	1600	1650	1850	2.90
2.9±0.3		0.79	25.10	19.80	495.0	1950	1950	2300	2.93
		0.60	43.30	25.80	1120.0	2600	2700	3600	6.57
		0.44	86.74	38.11	3306.0	4800	5000	5850	21.50
5.5±0.2		35.6	128.32	44.89	5758.7	5800	6100	7600	35.60
5.3±0.1		0.28	193.50	54.35	13885.0	8000			64.00
5.2+0.5/-0		0.29	183.67	53.25	9779.5	8300	8500	10260	51.00